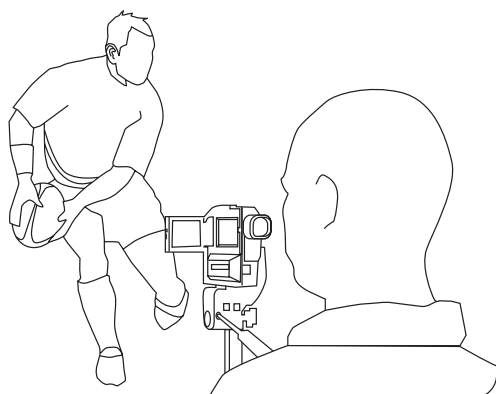


Siliconcoach Pro - specification sheet



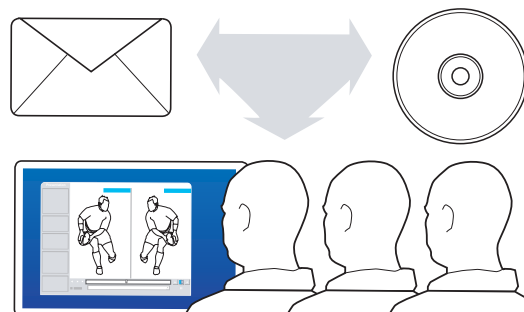
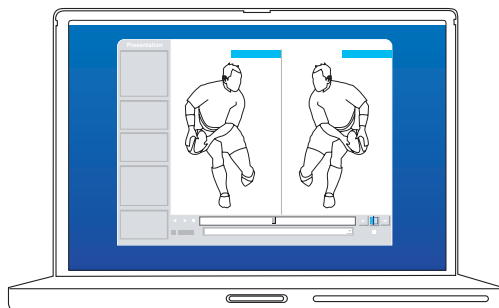
1. Capture video

- Direct capture from a digital camera (MiniDV, some USB, some high definition cameras but as standard DV via Firewire only. NOTE: this option is NOT available on all high definition cameras).
- Capture video from 2 MiniDV cameras at the same time to create one composited file or two individual files. (Pro v.7 only)
- Import video files from other sources such as avi, wmv, MPEG1, MPEG2 (from DVD cameras), MPEG4, AVCHD (H264 High Definition). (Pro v.7 only)
- Capture from analog devices (security cameras, TV, VCR) using an analog to digital converter (sold separately).
- Set capture time limit.
- Quick Present means one click from start capture to analyse
- Pause the capturing to cut out unwanted periods but keep one video file
- Control the MiniDV camera from the software for precise control when capturing from tape (start, stop, pause, slow motion and fast motion forward and backward)
- Auto numbering for multiple captures without manually renaming each file
- Two editable pull-down description boxes for quick file naming
- Optional audio capture.

2. Watch and review

- Trim video clips
- Convert your video clips to other formats (formats depend on the video codec's loaded on your computer)
- Use the familiar Windows™ folders and file structure to manage your video clips
- Use our unique presentation format to create a presentation that includes multiple slide layouts and multiple slides giving you incredible flexibility for presenting your video clips
- Use our unique templates (pre-made presentations without video clips) to accelerate the processes of creating presentations
- Create your own templates to suit your needs and make presentation creation fast and simple
- Premade slide layouts make it easy to present your video clips in multiple ways (1-4 clips on the screen at once plus 2 clips in overlay mode)
- Only synchronise a video clip once and it is synchronised each time it appears in the presentation
- Set start points and end points so you don't need to watch the whole video to see the key parts
- Flip videos to make a left-hander appear to be a right-hander
- Set playback speed (frame by frame, slow motion, normal speed).

Siliconcoach Pro - specification sheet



3. Analyse

- Expand analysis screen to full screen mode
- Save tool settings
- Multiple units (m, m/s, km/hr, ft, ft/s, miles/hr)
- Easy navigation through the slides in the presentation

Drawing tools

- Line, arrow, constrained horizontal line, constrained vertical line, freeform line, spline, spline arrow, rectangle, circle, dot, grid, alpha blend, temporary line setting, permanent line setting

General tools

- Line colour, line thickness, delete all, delete selected, magnifying glass, screen shot (including drawings), selected area screen shot to clipboard, text on screen

Measurement tools

- Normal angle tool, angle relative to a horizontal reference line, angle relative to a vertical reference line, set scale, discrete distance measurement, continuous distance measurement, data graphing, multiple stop watches

Video playback

- Turn videos 'on' or 'off' as desired
- Normal speed, slow motion, frame by frame (50 HZ Pal, 60 Hz NTSC)
- Loop control, watch video clips over and over without having to touch the PC

Record your analysis

- Use all the analysis features as normal but the software records everything you do, including your voice – over if desired.

4. Save, present and share

- Export screen shots as jpg files ready to be imported into other programmes using the screen shot tool
- Copy a selected area of the analysis screen to the clipboard for easy insertion into your favourite presentation or text editing software
- Export your recorded analysis as a high or low quality wmv, composited avi, to CD ROM, VCD (for playback on a DVD player), Siliconcoach player
- Share your recorded analysis easily via email, web (e.g. You Tube) CD, VCD (for DVD players)
- Organisations can use the unique web based ReportPAC Technology to disperse analysis guidelines (Technique Wizards) and collect the results back into a central database for further analysis and coach support.
- Export your presentations directly into iTunes and therefore onto your iPod or iPhone.

5. License Management System

- Move your siliconcoach license from one PC to another PC, this is great if you get a new PC and want to get up and running fast, or if you want to switch between a home PC and office PC.
- License server helps you to manage your own licenses if you have more than one or taking care of licenses for an organization
- Robust license means if you need to reformat the hard drive or reinstall the operating system on the PC, your license is still intact and ready for use once you install your siliconcoach product again.

System requirements (minimum)

- Digital video camera (MiniDV)
- Internet connection
- Windows® XP Service Pack 2, Windows® Vista
- CD read/write
- Sound card
- Firewire port (IEEE 1394)
- 2.0 GHz Pentium 4
- 512 MB RAM (for XP), 1 GB (for Vista)
- 20 GB free hard disk space
- 1024 x 768 monitor

General

- Stand alone licences
- Server licences
- Electronic help with index and search
- Sports video clips
- "How do I..." animations
- Quick start manual (PDF)
- User's manual (PDF)
- Advanced video render for improved picture quality
- Image filtering options for improved picture quality
- Languages (English, Dutch, French, German, Italian, Spanish, Swedish).